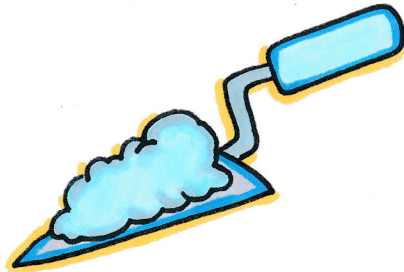


EIGHT MAGIC KEYS

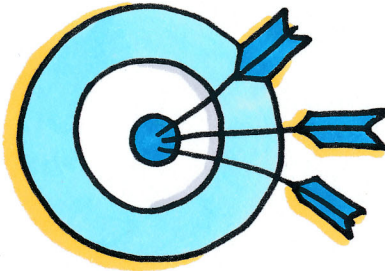
@Kwiens62

PLANNING FOR STUDENTS WITH FETAL ALCOHOL SPECTRUM DISORDER



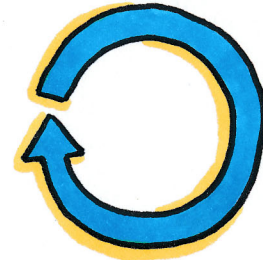
CONCRETE

TALK IN CONCRETE TERMS
AVOID ABSTRACT LANGUAGE



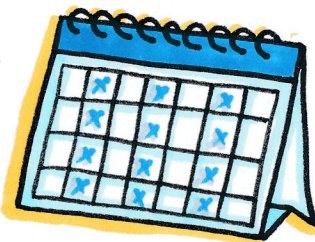
CONSISTENCY

PARENTS & EDUCATORS USE
THE SAME WORDS & STRATEGIES



REPETITION

RE-TEACH MANY TIMES TO RETAIN
IN LONG-TERM MEMORY

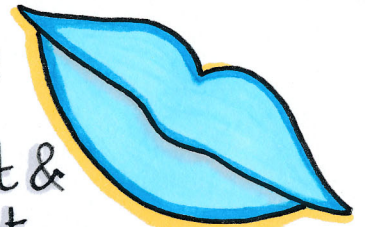


ROUTINE

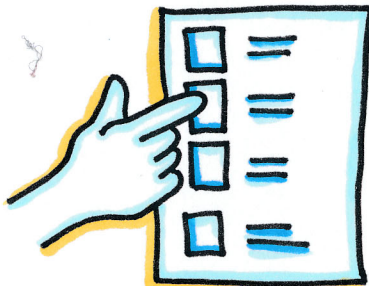
HELP REDUCE ANXIETY



Keep
It
Short &
Sweet

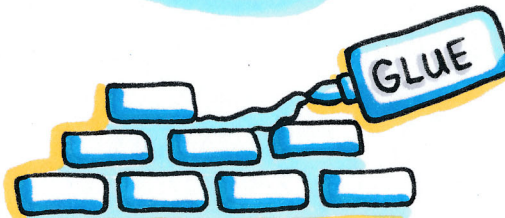


SIMPLICITY



SPECIFIC

SAY EXACTLY WHAT YOU MEAN
GIVE STEP BY STEP DIRECTIONS



STRUCTURE

THE GLUE THAT MAKES THE WORLD
MAKE SENSE... THEIR FOUNDATION



SUPERVISION

SCAFFOLD INDEPENDENCE

EIGHT KEYS: Developing Successful Interventions for Students with FASD

<ol style="list-style-type: none"> 1. Structure 2. Concrete 3. Consistency 4. Repetition 5. Routine 6. Simplicity 7. Specific 8. Supervision 	<p>4. Repetition - Students with FASD have chronic short-term memory problems; they forget things they want to remember as well as information that has been learned and retained for a period of time. In order for something to make it to long term memory, it may simply need to be re-taught and retaught.</p> <p>5. Routine - Stable routines that don't change from day to day will make it easier for students with FASD to know what to expect next and decrease their anxiety, enabling them to learn.</p>	<h2>Video Resources</h2>
<p>While there is no recommended "cookbook approach" to working with students with FASD, there are strategies that work, based on the following guidelines:</p> <p>1. Structure - Structure is the "glue" that makes the world make sense for a student with FASD. If this glue is taken away, the walls fall down! A student with FASD achieves and is successful because their world provides the appropriate structure as a permanent foundation.</p> <p>2. Concrete - Students with FASD do well when parents and educators talk in concrete terms, don't use words with double meanings, idioms, etc. Because their social-emotional understanding is far below their chronological age, it helps to "think younger" when providing assistance, giving instructions, etc.</p> <p>3. Consistency - Because of the difficulty students with FASD experience trying to generalize learning from one situation to another, they do best in an environment with few changes. This includes language. Teachers and parents can coordinate with each other to use the same words for key phases and oral directions.</p>	<p>6. Simplicity - Remember to Keep it Short and Sweet (KISS method). Students with FASD are easily overstimulated, leading to "shutdown" at which point no more information can be assimilated. Therefore, a simple environment is the foundation for an effective school program.</p> <p>7. Specific - Say exactly what you mean. Remember that students with FASD have difficulty with abstractions, generalization, and not being able to "fill in the blanks" when given a direction. Tell them step by step what to do, developing appropriate habit patterns.</p> <p>8. Supervision - Because of their cognitive challenges, students with FASD bring a naiveté to daily life situations. They need constant supervision, as with much younger children, to develop habit patterns of appropriate behavior.</p> <p>When a situation with a student with FASD is confusing and the intervention is not working, then:</p> <ul style="list-style-type: none"> • Stop Action! • Observe. • Listen carefully to find out where he/she is stuck. • Ask: What is hard? What would help? 	<p>8 Magic Keys of Success WRaP Schools http://bit.ly/217iHob</p> <p>8 Magic Keys of Success Anchorage School District and ASDtv http://bit.ly/1R6RqSE</p>
		<h2>The 2 x 10 Strategy - Relationships</h2>
		<p>The 2 x 10 strategy is simple: spend 2 minutes per day for 10 days in a row talking with an at-risk student about anything she or he wants to talk about. http://bit.ly/1KoeDHX</p> <p>The FIND, REMIND, and BIND strategy. FIND a student that you want a relationship with, REMIND them why you are grateful for the, and this will BIND you. http://bit.ly/1SCEQCC.</p>
		<div style="border: 2px solid black; padding: 10px;"> <h3>What is FASD?</h3> <p>FASD describes a spectrum of disorders caused by prenatal exposure to alcohol.</p> <p>Three or more domains of the central nervous system are impacted when you are living with FASD.</p> <p>Children living with FASD have a brain-based disability.</p> </div>